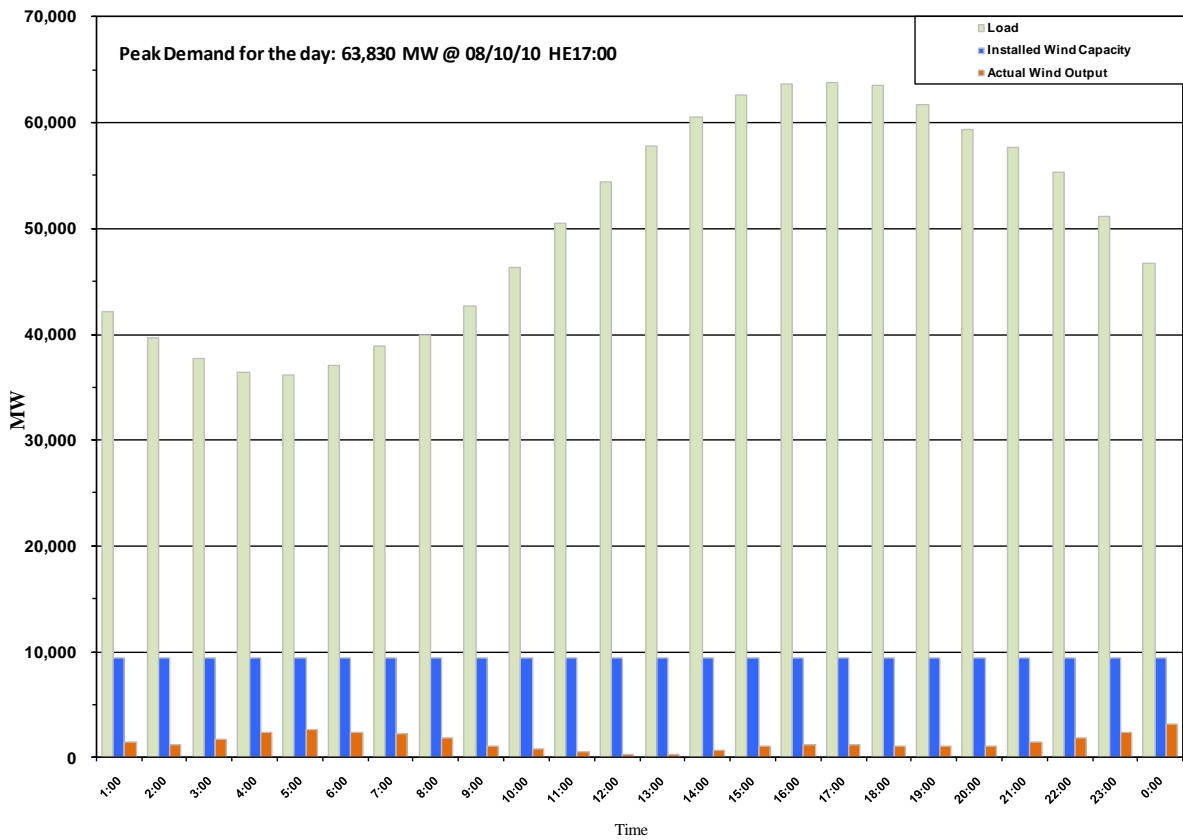




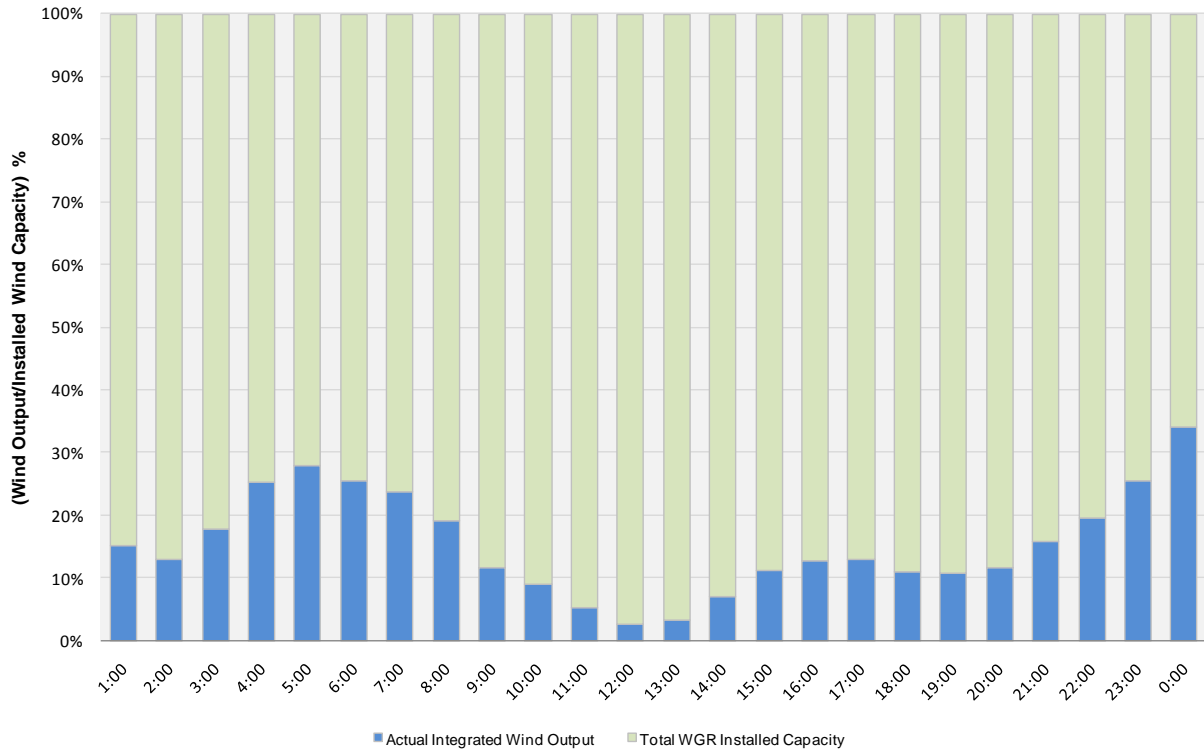
ERCOT Grid Operations Wind Penetration Report: 08/10/10

Peak Load **63,830 MW**
Load Peak Hour **17**
Wind Record 06/12/10 **7016 MW**
Max Wind value **3344 MW**
Wind Peak Hour **23:57:04**
Wind Penetration % **7.43**

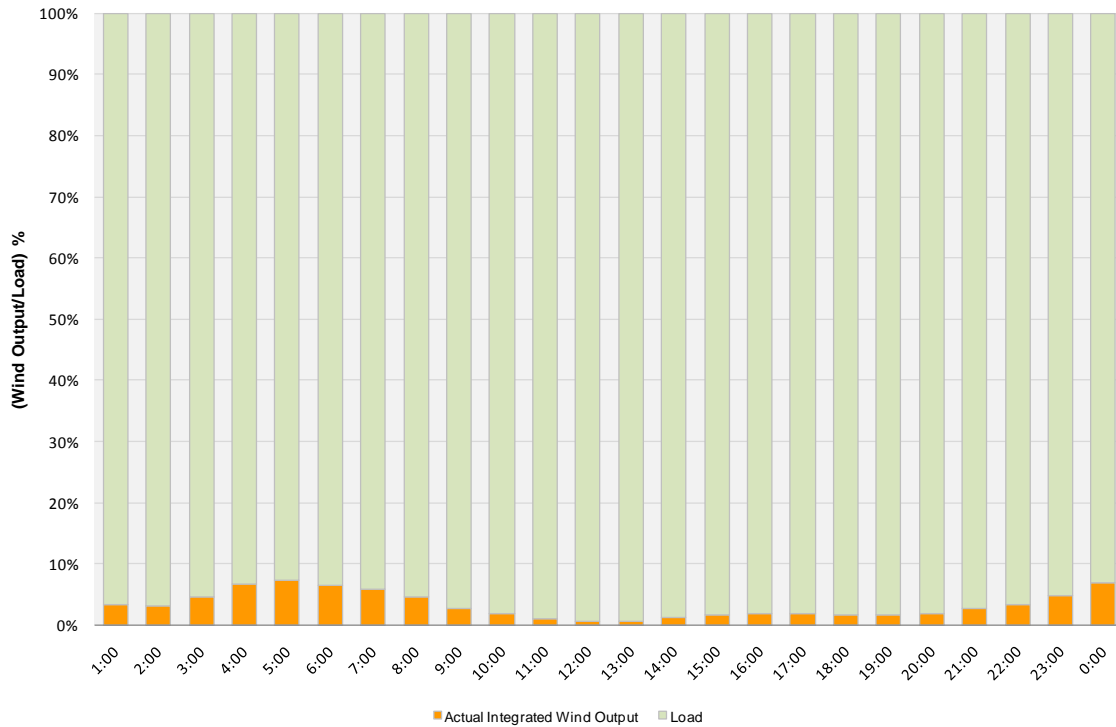




Actual Wind Output as a Percentage of the Total Installed Wind Capacity 08/10/2010



Actual Wind Output as a Percentage of the ERCOT Load 08/10/2010





ERCOT Load vs. Actual Wind Output 08/03/10 - 08/10/10

